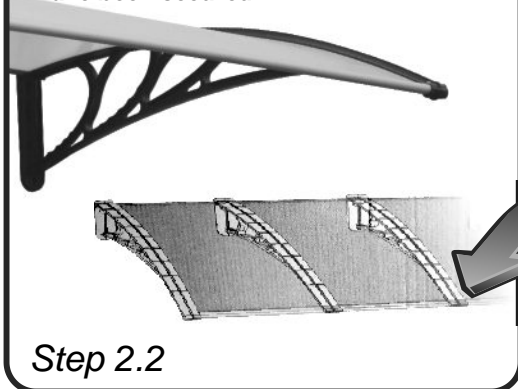


After first Multiwall sheet and brackets have been secured...



Step 2.2

We recommend that you drill pilot hole into top of awning bracket, when connecting 2 or more awnings together to secure Multiwall sheet.

Instruction Manual



DAP9 - DIY Awning

 **DUROplastic**

Head Office - Cape Town

Libra Close , Brackenfell
Tel 021 981 1440
Fax 021 981 1541

Gauteng

Cnr Northway Marlboro Drive
Kelvin , Sandton
Tel 011 804 2804
Fax 011 804 2808

George

Cnr Fabriek / Albert Rd
George Industria
Tel 044 873 0508/3
Fax 044 873 0503

Durban

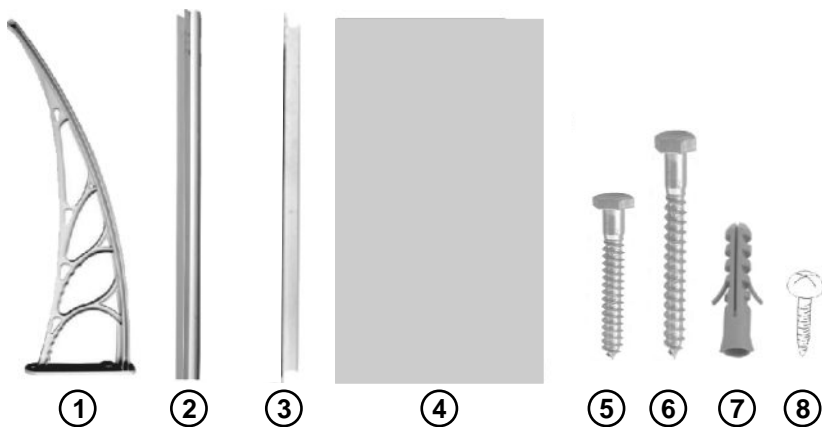
22 Trotter Road, Pinetown
Tel 031 701 9921
Fax 031 701 6806

For more product information, go to our website:
www.awningsa.co.za

Tools required



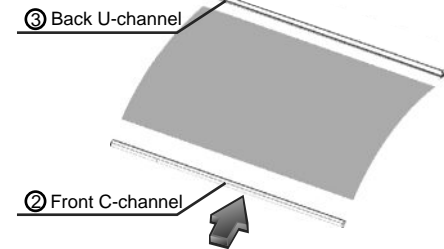
Contents



- | | |
|--------------------------|--|
| ① Bracket x2 | ② Front C-channel x1 |
| ③ Back U-channel x1 | ④ Duolite sheet x1 |
| ⑤ Coach Screw(8x50mm) x2 | ⑥ Coach Screw (8x75mm) x2 |
| ⑦ Fisher plug x4 | ⑧ Fixing pozi screws (16mm) to front and back of awning x4 |

Steps for installation

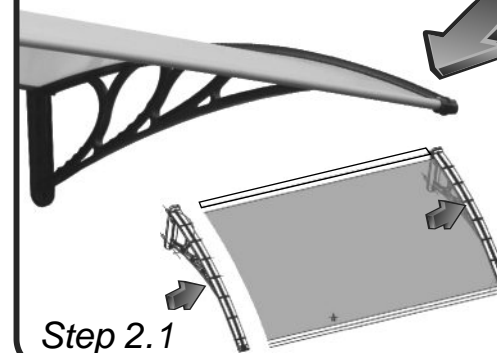
Slide C- and U-channel onto Duolite sheet.



Step 1

Do not remove Aluminium Foil Tape - it is there to reduce moisture inside flutes
In the event of moisture ingress, remove foil and blow clear with hair dryer. Close again with Duck Tape / Foil Tape.

Slide Duolite Multiwall sheet into brackets and secure.

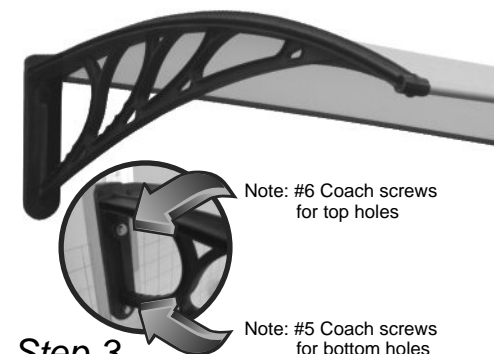


Step 2.1

Screw #8 into pre-drilled holes in the front and back of bracket

When connecting 2 or more awnings together, follow instructions on the next page.

Using a spirit level, mark and secure awning to the wall



Step 3

