

DUROBAR FASTENING KIT

Each kit is suitable for either ALUMINIUM, STEEL or WOOD frames, with caps in various colour finishes: White, Silver/Grey or Brown/Bronze.

Nylon Covercaps	8
Nylon Capsprings flat M6	8
Alu Pop Rivet (4.8x18mm)	8
Safety / One Way Screw (4.8x25mm)	8
2.5mm Drill bit	1
6mm Drill bit	1

Installation details inside

The following 2 steps apply to either wood, steel or aluminum window frames:

STEP 1

Ensure bar is cut to correct length

STEP 2

Using 6mm drill bit, supplied in **DUROBAR FASTENING KIT** drill 1 hole at each end of required length, making sure gap from edge of bar is sufficient, between 10 - 20mm, depending on frame size.

NOTE:

That the hole MUST be larger, (at least 0.5mm play around fastener) this is due to the thermal expansion/contraction of the Durobar strip. This is common for all polycarbonate.

If using Durobar for ballustrades, door bars, animal bars on canopies, or any other use make sure that Durobar can "move" due to thermal expansion.

a division of
DUROplastic

HEAD OFFICE, CAPE TOWN
Libra Close, Brackenfell

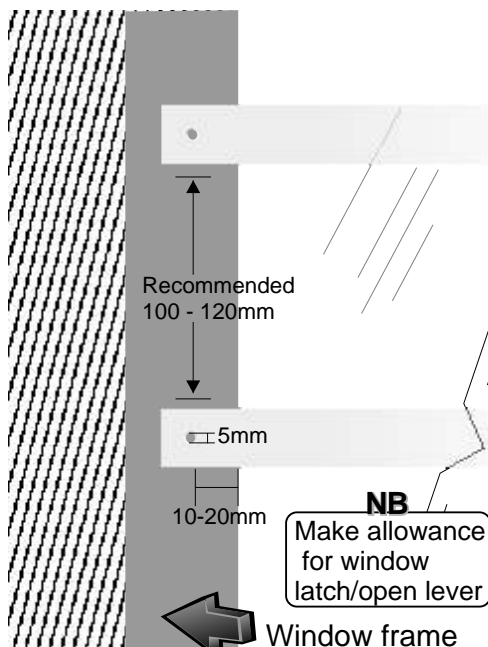
•
JOHANNESBURG
Cnr Northway / Marboro Drive
Kelvin, Sandton

•
GEORGE
Cnr Fabriek / Albert Rd
George Industria

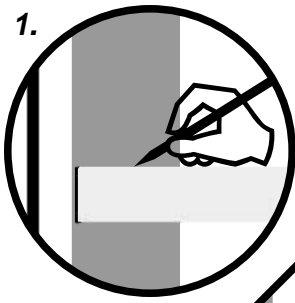
•
DURBAN
Trotter Road
Pine Town

Tel 0860 766346

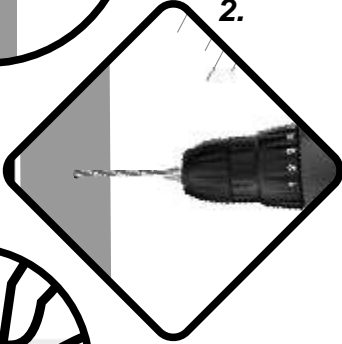
www.durostore.com



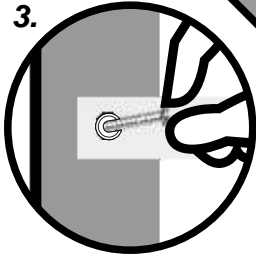
1.



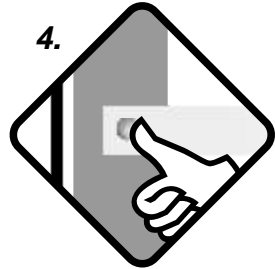
2.



3.



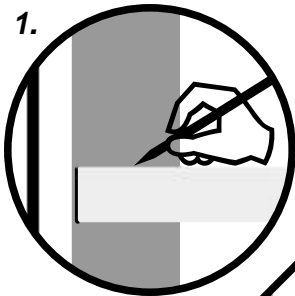
4.



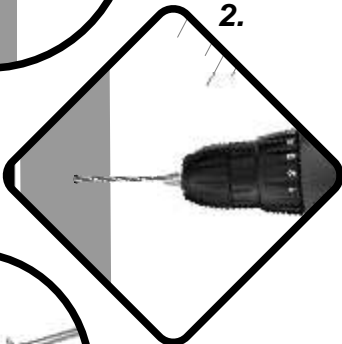
STEP 3 WOOD INSTALLATION

- Mark on frame where pilot holes are to be drilled, using spirit level to ensure that bar is straight. **Note space bars about 100 - 120mm apart**
- Using 2.5mm Drill bit, drill pilot hole into wood or through steel frame
- Take 25mm one way self tapper with nylon capspring and secure Durobar to frame, allow for thermal movement of Durobar
- Cover the screw with the nylon covercap in your choice of either white, silver or brown

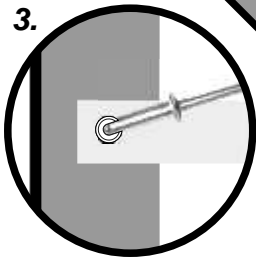
1.



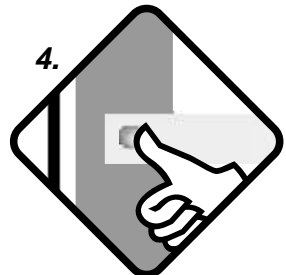
2.



3.



4.



STEP 4 ALUMINIUM OR STEEL INSTALLATION

- Mark on frame where pilot holes are to be drilled, using spirit level to ensure that bar is straight. **Note space bars about 100 - 120mm apart**
- Using 6mm drill bit, drill hole through aluminum/steel frame
- Take poprivet and nylon capspring and secure Durobar to frame, allow for thermal movement of Durobar
- Cover rivet end with nylon covercap in your choice of either white, silver or brown